



Ewald Stöteler Köthen 2016 Presentation 4.

Alzheimer's disease



Ewald Stöteler Köthen 2016 Presentation 4.



Alzheimer's disease

General information.

- worldwide approximately 24.000.000 patients.
- Numbers are rising. (In The Netherlands by 320% since 1996)
- There is no cure

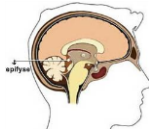
Ewald Stöteler Köthen 2016 Presentation 4.



Epiphysis cerebri

Function of the pineal gland

- Day rhythm
- Waking and sleeping (melatonin)
- Menstrual rhythm
- Seasons
- Puberty
- fertility
- Menopause
- etc



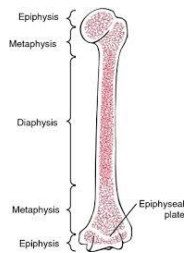
Ewald Stöbeler Köthen 2016 Presentation 4.

Epiphysis

There are two kind of epiphyses

Also:

- epiphysis of the bone
- The growing part (growth plate)
- Creating the joint
- Enabling motion-direction
- Expression of will

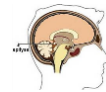


Ewald Stöbeler Köthen 2016 Presentation 4.

Epiphysis

Both epiphyses contain the same minerals.

- Cacarea fluoro phosphoric (Apatit)
- Calcite
- Magnetite



Ewald Stöbeler Köthen 2016 Presentation 4.

Epiphysis cerebri

- Disturbance of the functioning of the epiphysis
- Disturbance of the rhythm of the life processes
- Disturbance of sleep-wake rhythm is connected with neurological disease as Parkinson's disease and Alzheimer's disease

100% of the Alzheimer patients suffer from aluminum intoxication.

(source Stephani Seneff)

Ewald Stöbeler Köthen 2016 Presentation 4.



Epiphysis cerebri

Disturbance takes place because of intoxication

- Intoxication because of the excessive exposure to and intake of aluminum
- Aluminum in deodorant spray's, *vaccinations*, toothpaste, plastic bottles, tin can's, etc.

Detoxification is important

With for example:

- Hepar. sulph, Equisetum arvense, Urtica urens, Aluminium

DETOX

Ewald Stöbeler Köthen 2016 Presentation 4.



Epiphysis cerebri and the 'Bone set'

The major remedy to restore the functioning of the epiphysis. Symphytum officinale. Approximately 170 Mind symptoms

- BED- Remain in bed ; desire to,
- brooding
- CONCENTRATION - difficult - attention , can not fix
- Delusions - child - he is a child
- Delusions - child - he is a child - acts like a child ; and
- Delusions - new; everything is
- MISTAKES ; making - time , in - conception of time ; has lost the
- SPEECH - monosyllabic

Ewald Stöbeler Köthen 2016 Presentation 4.



Alzheimer’s disease and the B.J Protocols

In the Banerji protocoLLs we find:

Alzheimer’s disease with restlessness
Hyos C30 and Symph. C200 alt.

In ALS:
Symph C200 (muscle tonus) and Kali.carb C200
(lunginfection alt)

In both neurological diseases the epiphysis
plays a major role



Ewald Stöteler Köthen 2016 Presentation 4.



Ewald Stöteler Köthen 2016 Presentation 4.